

FEATURES

- 16-bit resolution AD5543
- 14-bit resolution AD5553
- ±1 LSB DNL
- ±1 LSB INL
- Low noise: 12 nV/√Hz
- Low power: $I_{DD} = 10 \mu\text{A}$
- 0.5 μs settling time
- 4Q multiplying reference input
- 2 mA full-scale current ± 20%, with $V_{REF} = 10\text{ V}$
- Built-in RFB facilitates voltage conversion
- 3-wire interface
- Ultracompact 8-lead MSOP and 8-lead SOIC packages

APPLICATIONS

- Automatic test equipment
- Instrumentation
- Digitally controlled calibration
- Industrial control PLCs

GENERAL DESCRIPTION

The AD5543/AD5553 are precision 16-/14-bit, low power, current output, small form factor digital-to-analog converters (DACs). They are designed to operate from a single 5 V supply with a $\pm 10\text{ V}$ multiplying reference.

The applied external reference, V_{REF} , determines the full-scale output current. An internal feedback resistor (R_{FB}) facilitates the R-2R and temperature tracking for voltage conversion when combined with an external op amp.

A serial-data interface offers high speed, 3-wire microcontroller-compatible inputs using serial data in (SDI), clock (CLK), and chip select (CS).

The AD5543/AD5553 are packaged in ultracompact (3 mm × 4.7 mm) 8-lead MSOP and 8-lead SOIC packages.

FUNCTIONAL BLOCK DIAGRAM

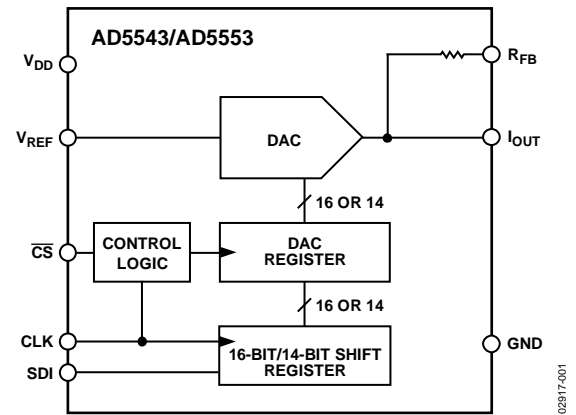


Figure 1.

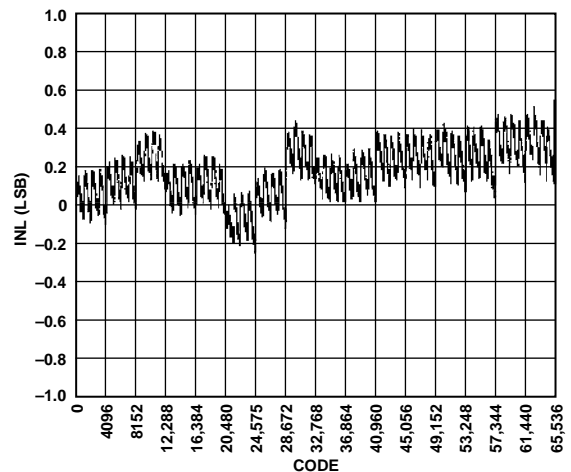


Figure 2. Integral Nonlinearity

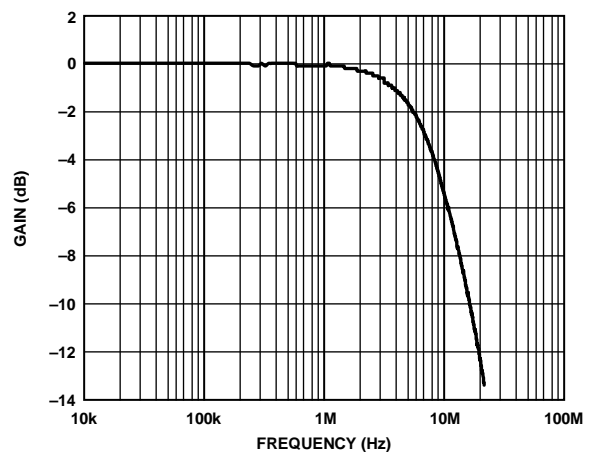


Figure 3. Reference Multiplying Bandwidth

Rev. D

Information furnished by Analog Devices is believed to be accurate and reliable. However, no responsibility is assumed by Analog Devices for its use, nor for any infringements of patents or other rights of third parties that may result from its use. Specifications subject to change without notice. No license is granted by implication or otherwise under any patent or patent rights of Analog Devices. Trademarks and registered trademarks are the property of their respective owners.

TABLE OF CONTENTS

| | | | |
|--|---|---|----|
| Features | 1 | Serial Data Interface..... | 10 |
| Applications..... | 1 | ESD Protection Circuits | 10 |
| General Description | 1 | PCB Layout and Power Supply Bypassing | 10 |
| Functional Block Diagram | 1 | Applications Information | 11 |
| Revision History | 2 | Stability | 11 |
| Specifications..... | 3 | Positive Voltage Output..... | 11 |
| Timing Diagrams..... | 4 | Bipolar Output..... | 11 |
| Absolute Maximum Ratings..... | 5 | Programmable Current Source | 12 |
| ESD Caution..... | 5 | Reference Selection | 12 |
| Pin Configuration and Function Descriptions..... | 6 | Amplifier Selection | 12 |
| Typical Performance Characteristics | 7 | Outline Dimensions | 14 |
| Circuit Operation | 9 | Ordering Guide | 15 |
| DAC Section..... | 9 | | |

REVISION HISTORY

4/10—Rev. C to Rev. D

| | |
|---|----|
| Changes to Figure 3..... | 1 |
| Changes to Table 1..... | 3 |
| Moved Timing Diagrams Section | 4 |
| Moved Table 4 | 6 |
| Delete Figure 13; Renumbered Sequentially..... | 8 |
| Changes to Figure 14..... | 8 |
| Changes to Figure 18..... | 9 |
| Moved Table 5 and Table 6 | 10 |
| Added Reference Selection Section and Amplifier Selection Section..... | 12 |
| Added Table 7, Table 8, and Table 9; Renumbered Sequentially..... | 13 |

10/09—Rev. B to Rev. C

| | |
|---------------------------------|----|
| Updated Outline Dimensions..... | 14 |
| Changes to Ordering Guide | 15 |

7/09—Rev. A to Rev. B

| | |
|----------------------------------|-----------|
| Updated Format..... | Universal |
| Change to Features Section | 1 |
| Updated Outline Dimensions..... | 14 |
| Changes to Ordering Guide | 15 |

2/03—Rev. 0 to Rev. A

| | |
|---------------------------------|---|
| Changes to Ordering Guide | 3 |
|---------------------------------|---|

12/02—Revision 0: Initial Version

SPECIFICATIONS

$V_{DD} = 5\text{ V} \pm 10\%$, $V_{SS} = 0\text{ V}$, $I_{OUT} = \text{virtual GND}$, $GND = 0\text{ V}$, $V_{REF} = 10\text{ V}$, $T_A = \text{full operating temperature range}$, unless otherwise noted.

Table 1.

| Parameter | Symbol | Condition | 5 V \pm 10% | Unit |
|---|------------------------|--|-------------------------------|-------------------------------|
| STATIC PERFORMANCE¹ | | | | |
| Resolution | N | 1 LSB = $V_{REF}/2^{16} = 153\ \mu\text{V}$ when $V_{REF} = 10\text{ V}$ (AD5543) 1 LSB = $V_{REF}/2^{14} = 610\ \mu\text{V}$ when $V_{REF} = 10\text{ V}$ (AD5553) | 16 14 | Bits Bits |
| Relative Accuracy | INL | Grade: AD5553C Grade: AD5543C Grade: AD5543B | ± 1 ± 1 ± 2 | LSB max LSB max LSB max |
| Differential Nonlinearity | DNL | Monotonic | ± 1 | LSB max |
| Output Leakage Current | I_{OUT} | Data = 0x0000, $T_A = 25^\circ\text{C}$ Data = 0x0000, $T_A = T_A \text{ maximum}$ | 10 20 | nA max nA max |
| Full-Scale Gain Error | G_{FSE} | Data = 0xFFFF | $\pm 1/\pm 4$ | mV typ/max |
| Full-Scale Temperature Coefficient ² | TCV_{FS} | | 1 | ppm/ $^\circ\text{C}$ typ |
| REFERENCE INPUT | | | | |
| V_{REF} Range | V_{REF} | | -15/+15 | V min/max |
| Input Resistance | R_{REF} | | 5 | k Ω typ ³ |
| Input Capacitance ² | C_{REF} | | 5 | pF typ |
| ANALOG OUTPUT | | | | |
| Output Current | I_{OUT} | Data = 0xFFFF for AD5543 Data = 0x3FFF for AD5553 | 2 | mA typ |
| Output Capacitance ² | C_{OUT} | Code dependent | 200 | pF typ |
| LOGIC INPUTS AND OUTPUT | | | | |
| Logic Input Low Voltage | V_{IL} | | 0.8 | V max |
| Logic Input High Voltage | V_{IH} | | 2.4 | V min |
| Input Leakage Current | I_{IL} | | 10 | μA max |
| Input Capacitance ² | C_{IL} | | 10 | pF max |
| INTERFACE TIMING^{2, 4} | | | | |
| Clock Input Frequency | f_{CLK} | See Figure 4 and Figure 5 | 50 | MHz |
| Clock Width High | t_{CH} | | 10 | ns min |
| Clock Width Low | t_{CL} | | 10 | ns min |
| \overline{CS} to Clock Setup | t_{CSS} | | 0 | ns min |
| Clock to \overline{CS} Hold | t_{CSH} | | 10 | ns min |
| Data Setup | t_{DS} | | 5 | ns min |
| Data Hold | t_{DH} | | 10 | ns min |
| SUPPLY CHARACTERISTICS | | | | |
| Power Supply Range | $V_{DD \text{ RANGE}}$ | | 4.5/5.5 | V min/max |
| Positive Supply Current | I_{DD} | Logic inputs = 0 V | 10 | μA max |
| Power Dissipation | P_{DISS} | Logic inputs = 0 V | 0.055 | mW max |
| Power Supply Sensitivity | P_{SS} | $\Delta V_{DD} = \pm 5\%$ | 0.006 | %/% max |

AD5543/AD5553

| Parameter | Symbol | Condition | 5 V ± 10% | Unit |
|---------------------------------|-------------------|---|-----------|---------|
| AC CHARACTERISTICS ⁴ | | | | |
| Output Voltage Settling Time | t_s | To ±0.1% of full scale, Data = 0x0000 to 0xFFFF to 0x0000 for AD5543 Data = 0x0000 to 0x3FFF to 0x0000 for AD5553 | 0.5 | μs typ |
| Reference Multiplying Bandwidth | BW | $V_{REF} = 100$ mV rms, data = 0xFFFF | 6.6 | MHz typ |
| DAC Glitch Impulse | Q | $V_{REF} = 0$ V, data = 0x7FFF to 0x8000 for AD5543 | 7 | nV-sec |
| Feedthrough Error | V_{OUT}/V_{REF} | Data = 0x0000, $V_{REF} = 100$ mV rms, same channel | -83 | dB |
| Digital Feedthrough | Q | $C_S = 1$ and $f_{CLK} = 1$ MHz | 7 | nV-sec |
| Total Harmonic Distortion | THD | $V_{REF} = 5$ V p-p, data = 0xFFFF, $f = 1$ kHz | -103 | dB typ |
| Output Spot Noise Voltage | e_N | $f = 1$ kHz, BW = 1 Hz | 12 | nV/√Hz |

¹ All static performance tests (except I_{OUT}) are performed in a closed-loop system using an external precision OP177 I-to-V converter amplifier. The AD5543 R_{FB} terminal is tied to the amplifier output. The +IN op amp is grounded, and the DAC I_{OUT} is tied to the -IN op amp. Typical values represent average readings measured at 25°C.

² These parameters are guaranteed by design and are not subject to production testing.

³ All ac characteristic tests are performed in a closed-loop system using an AD8038 I-to-V converter amplifier except for THD where an AD8065 was used.

⁴ All input control signals are specified with $t_r = t_f = 2.5$ ns (10% to 90% of 3 V) and timed from a voltage level of 1.5 V.

TIMING DIAGRAMS

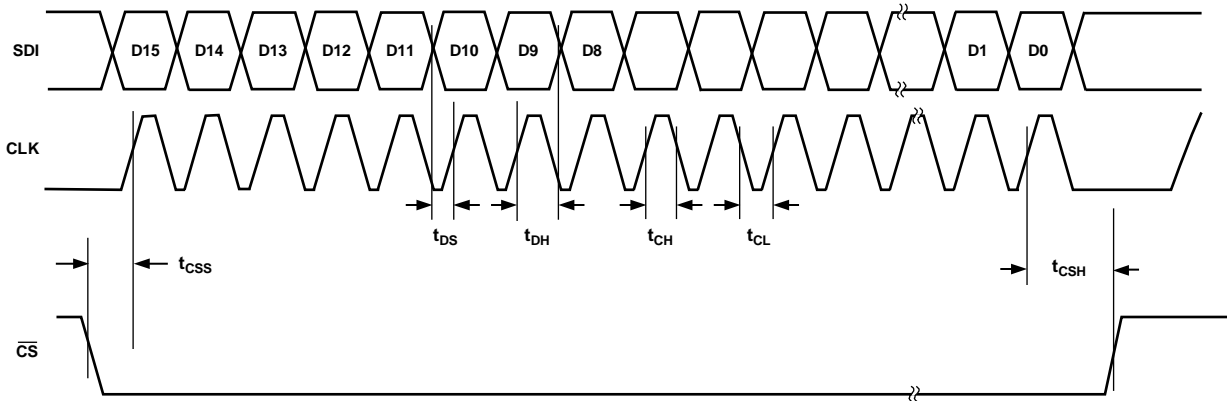


Figure 4. AD5543 Timing Diagram

02917-016

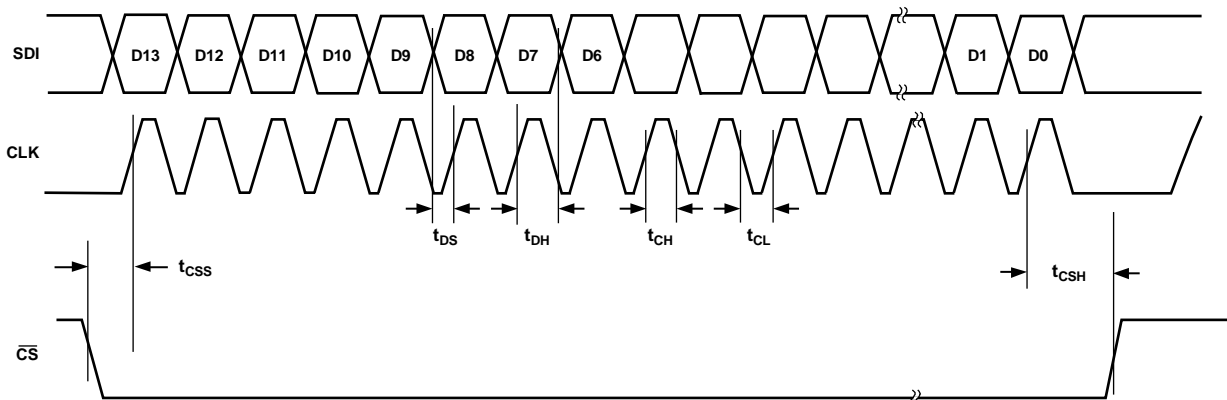


Figure 5. AD5553 Timing Diagram

02917-017

ABSOLUTE MAXIMUM RATINGS

Table 2.

| Parameter | Rating |
|--|--|
| V _{DD} to GND | −0.3 V to +8 V |
| V _{REF} to GND | −18 V to +18 V |
| Logic Inputs to GND | −0.3 V to +8 V |
| V(I _{OUT}) to GND | −0.3 V to V _{DD} + 0.3 V |
| Input Current to Any Pin Except Supplies | ±50 mA |
| Package Power Dissipation | (T _{J Max} − T _A)/θ _{JA} |
| Thermal Resistance, θ _{JA} | |
| 8-Lead Surface Mount (MSOP) | 150°C/W |
| 8-Lead Surface Mount (SOIC) | 100°C/W |
| Maximum Junction Temperature (T _{J Max}) | 150°C |
| Operating Temperature Range | |
| Model B and Model C | −40°C to +85°C |
| Storage Temperature Range | −65°C to +150°C |
| Lead Temperature | |
| R-8, RM-8 (Vapor Phase, 60 sec) | 215°C |
| R-8, RM-8 (Infrared, 15 sec) | 220°C |

Stresses above those listed under Absolute Maximum Ratings may cause permanent damage to the device. This is a stress rating only; functional operation of the device at these or any other conditions above those indicated in the operational section of this specification is not implied. Exposure to absolute maximum rating conditions for extended periods may affect device reliability.

ESD CAUTION



ESD (electrostatic discharge) sensitive device. Charged devices and circuit boards can discharge without detection. Although this product features patented or proprietary protection circuitry, damage may occur on devices subjected to high energy ESD. Therefore, proper ESD precautions should be taken to avoid performance degradation or loss of functionality.

AD5543/AD5553

PIN CONFIGURATION AND FUNCTION DESCRIPTIONS

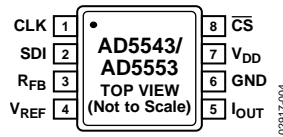


Figure 6. Pin Configuration

Table 3. Pin Function Descriptions

| Pin No. | Mnemonic | Description |
|---------|------------------------|---|
| 1 | CLK | Clock Input. Positive-edge triggered, clocks data into shift register. |
| 2 | SDI | Serial Register Input. Data loads directly into the shift register MSB first. Extra leading bits are ignored. |
| 3 | R _{FB} | Internal Matching Feedback Resistor. This pin connects to an external op amp for voltage output. |
| 4 | V _{REF} | DAC Reference Input Pin. Establishes DAC full-scale voltage. Constant input resistance vs. code. |
| 5 | I _{OUT} | DAC Current Output. This pin connects to the inverting terminal of the external precision I-to-V op amp for voltage output. |
| 6 | GND | Analog and Digital Ground. |
| 7 | V _{DD} | Positive Power Supply Input. Specified range of operation at 5 V ± 10%. |
| 8 | $\overline{\text{CS}}$ | Chip Select. Active low digital input. Transfers shift-register data to DAC register on rising edge. See Table 4 for operation. |

Table 4. Control-Logic Truth Table

| CLK | $\overline{\text{CS}}$ | Serial Shift Register Function | DAC Register |
|-------------------------|-------------------------|---|--------------------------------------|
| X | H | No effect | Latched |
| \uparrow ¹ | L | Shift register data advanced one bit | Latched |
| X ¹ | H | No effect | Latched |
| X ¹ | \uparrow ¹ | Shift register data transferred to DAC register | New data loaded from serial register |

¹ \uparrow = positive logic transition; X = don't care.

TYPICAL PERFORMANCE CHARACTERISTICS

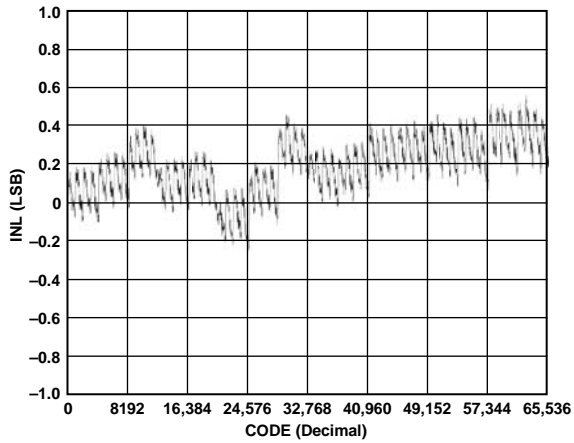


Figure 7. AD5543 Integral Nonlinearity Error

02917-005

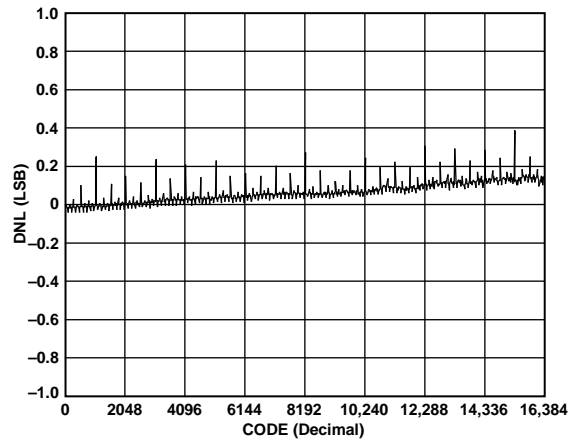


Figure 10. AD5553 Differential Nonlinearity Error

02917-008

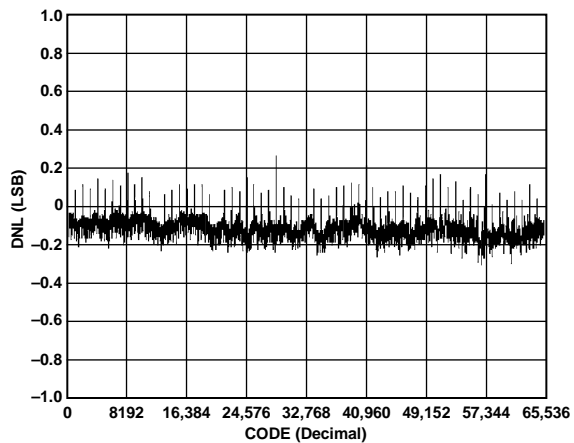


Figure 8. AD5543 Differential Nonlinearity Error

02917-006

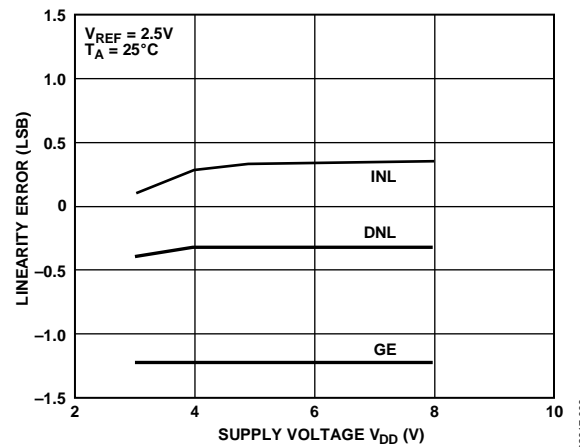


Figure 11. Linearity Error vs. V_{DD}

02917-009

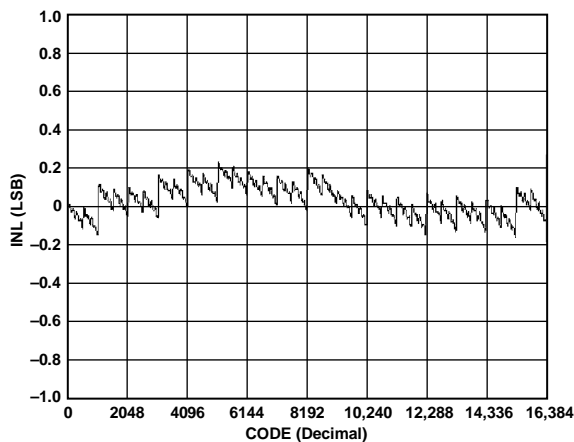


Figure 9. AD5553 Integral Nonlinearity Error

02917-007

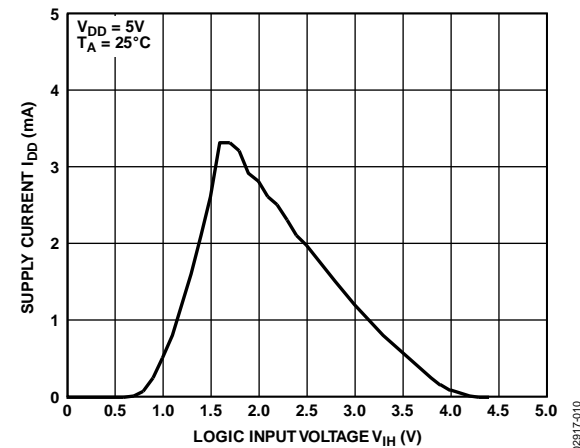


Figure 12. Supply Current vs. Logic Input Voltage

02917-010

AD5543/AD5553

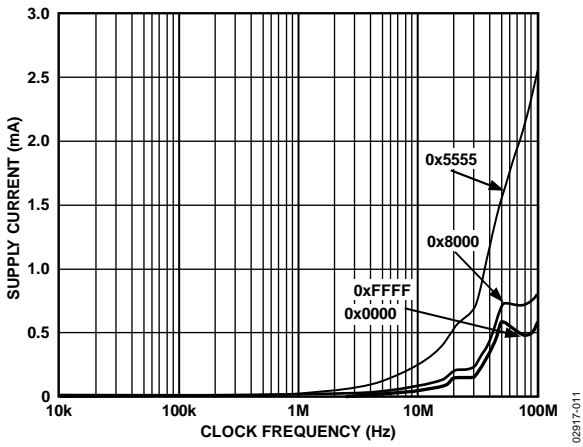


Figure 13. AD5543 Supply Current vs. Clock Frequency

02917-011

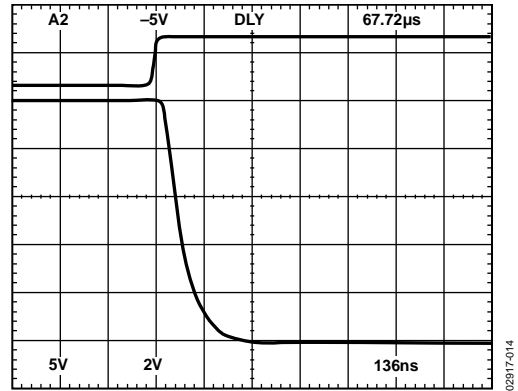


Figure 15. Settling Time

02917-014

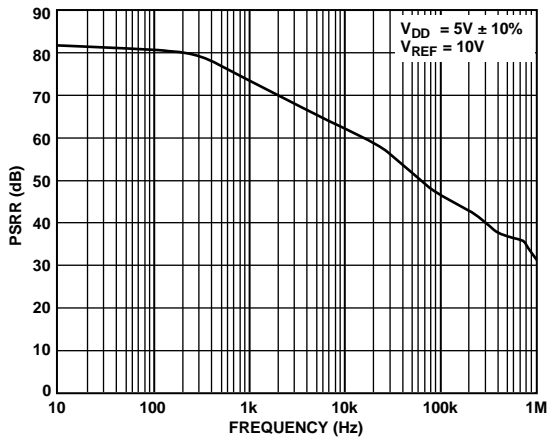


Figure 14. Power Supply Rejection Ratio (PSRR) vs. Frequency

02917-012

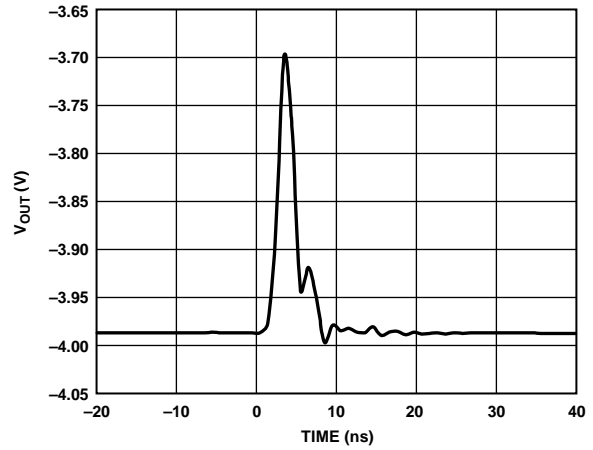


Figure 16. Midscale Transition and Digital Feedthrough

02917-026

CIRCUIT OPERATION

The AD5543/AD5553 contain 16-/14-bit current output, DACs, serial input registers, and DAC registers. Both converters use a 3-wire serial data interface.

DAC SECTION

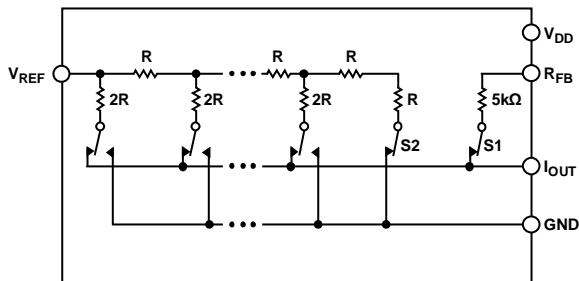
The DAC architecture uses a current steering R-2R ladder design. Figure 17 shows the typical equivalent DAC structure. The DAC contains a matching feedback resistor for use with an external op amp (see Figure 18). With R_{FB} and I_{OUT} terminals connected to the op amp output and inverting node, respectively, a precision voltage output is achieved as

$$V_{OUT} = -V_{REF} \times D/65,536 \text{ (AD5543)} \quad (1)$$

$$V_{OUT} = -V_{REF} \times D/16,384 \text{ (AD5553)} \quad (2)$$

Note that the output voltage polarity is the opposite of the V_{REF} polarity for dc reference voltages.

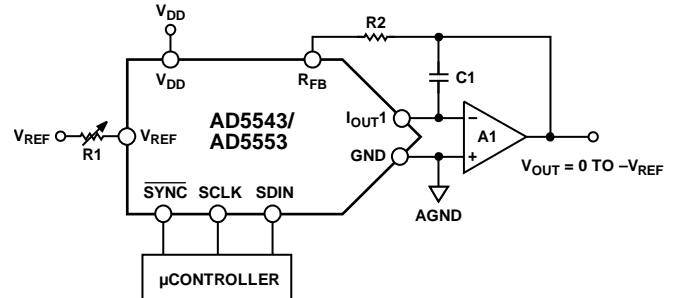
These DACs are designed to operate with either negative or positive reference voltages. The V_{DD} power pin is only used by the internal logic to drive the on and off states of the DAC switches.



DIGITAL INTERFACE CONNECTIONS OMITTED FOR CLARITY; SWITCHES S1 AND S2 ARE CLOSED, V_{DD} MUST BE POWERED.

Figure 17. Equivalent R-2R DAC Circuit

Note that a matching switch is used in series with the internal 5 kΩ feedback resistor. If users attempt to measure R_{FB} , power must be applied to V_{DD} to achieve continuity.



- NOTES
1. R1 AND R2 USED ONLY IF GAIN ADJUSTMENT IS REQUIRED.
 2. C1 PHASE COMPENSATION (4pF TO 6pF) MAY BE REQUIRED IF A1 IS A HIGH SPEED AMPLIFIER.

Figure 18. Voltage Output Configuration

These DACs are also designed to accommodate ac reference input signals. The AD5543 accommodates input reference voltages in the range of -12 V to $+12 \text{ V}$. The reference voltage inputs exhibit a constant nominal input resistance value of $5 \text{ k}\Omega \pm 30\%$. The DAC output (I_{OUT}) is code dependent, producing various resistances and capacitances. External amplifier choice should take into account the variation in impedance generated by the AD5543 on the inverting input node of the amplifier. The feedback resistance, in parallel with the DAC ladder resistance, dominates output voltage noise. To maintain good analog performance, power supply bypassing of $0.01 \mu\text{F}$ to $0.1 \mu\text{F}$ ceramic or chip capacitors, in parallel with a $1 \mu\text{F}$ tantalum capacitor, is recommended. Due to degradation of PSRR in frequency, users must avoid using switching power supplies.

AD5543/AD5553

SERIAL DATA INTERFACE

The AD5543/AD5553 use a 3-wire (\overline{CS} , SDI, CLK) serial data interface. New serial data is clocked into the serial input register in a 16-bit data-word format for the AD5543. The MSB is loaded first. Table 5 defines the 16 data-word bits. Data is placed on the SDI pin and clocked into the register on the positive clock edge of CLK, subject to the data setup-and-hold time requirements that are specified in the interface timing specifications. Only the last 16 bits clocked into the serial register are interrogated when the \overline{CS} pin is strobed to transfer the serial register data to the DAC register. Because most microcontrollers output serial data in 8-bit bytes, two data bytes can be written to the AD5543/AD5553. After loading the serial register, the rising edge of \overline{CS} transfers the serial register data to the DAC register; during this strobe, the CLK should not be toggled. For the AD5553, with 16-bit clock cycles, the two LSBs are ignored.

ESD PROTECTION CIRCUITS

All logic input pins contain back-biased ESD protection Zener diodes that are connected to ground (DGND) and V_{DD} , as shown in Figure 19.

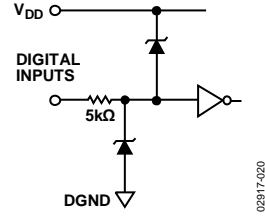


Figure 19. Equivalent ESD Protection Circuits

PCB LAYOUT AND POWER SUPPLY BYPASSING

It is a good practice to employ compact, minimum lead length PCB layout design. The leads to the input should be as short as possible to minimize IR drop and stray inductance.

It is also essential to bypass the power supplies with quality capacitors for optimum stability. Supply leads to the device should be bypassed with 0.01 μF to 0.1 μF disc or chip ceramic capacitors. Low ESR 1 μF to 10 μF tantalum or electrolytic capacitors should also be applied at the supplies to minimize transient disturbance and filter out low frequency ripple.

The PCB metal traces between V_{REF} and R_{FB} should also be matched to minimize gain error.

Table 5. AD5543 Serial Input Register Data Format; Data Loaded MSB-First Format

| B15 (MSB) | B14 | B13 | B12 | B11 | B10 | B9 | B8 | B7 | B6 | B5 | B4 | B3 | B2 | B1 | B0 (LSB) |
|-----------|-----|-----|-----|-----|-----|----|----|----|----|----|----|----|----|----|----------|
| D15 | D14 | D13 | D12 | D11 | D10 | D9 | D8 | D7 | D6 | D5 | D4 | D3 | D2 | D1 | D0 |

Table 6. AD5553 Serial Input Register Data Format; Data Loaded MSB-First Format

| B13 (MSB) ¹ | B12 | B11 | B10 | B9 | B8 | B7 | B6 | B5 | B4 | B3 | B2 | B1 | B0 (LSB) |
|------------------------|-----|-----|-----|----|----|----|----|----|----|----|----|----|----------|
| D13 | D12 | D11 | D10 | D9 | D8 | D7 | D6 | D5 | D4 | D3 | D2 | D1 | D0 |

¹ A full 16-bit data-word can be loaded into the AD5553 serial input register, but only the last 14 bits entered are transferred to the DAC register when \overline{CS} returns to logic high.

APPLICATIONS INFORMATION

STABILITY

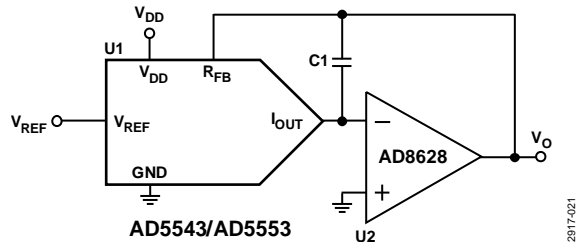


Figure 20. Optional Compensation Capacitor for Gain Peaking Prevention

In the I-to-V configuration, the I_{OUT} of the DAC and the inverting node of the op amp must be connected as close as possible to each other, and proper PCB layout technique must be employed. Because every code change corresponds to a step function, gain peaking may occur if the op amp has limited GBP and there is excessive parasitic capacitance at the inverting node.

An optional compensation capacitor, C1, can be added for stability, as shown in Figure 20. C1 should be found empirically, but 20 pF is generally adequate for the compensation.

POSITIVE VOLTAGE OUTPUT

To achieve the positive voltage output, an applied negative reference to the input of the DAC is preferred over the output inversion through an inverting amplifier because of the tolerance errors of the resistors. To generate a negative reference, the reference can be level-shifted by an op amp such that the V_{OUT} and GND pins of the reference become the virtual ground and -2.5 V, respectively (see Figure 21).

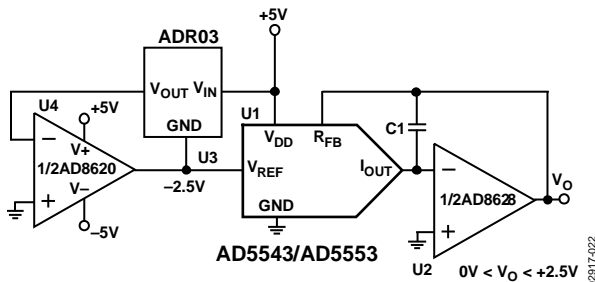


Figure 21. Positive Voltage Output Configuration

BIPOLAR OUTPUT

The AD5543/AD5553 are inherently 2-quadrant multiplying DACs. That is, they can easily be set up for unipolar output operation. The full-scale output polarity is the inverse of the reference input voltage.

In some applications, it may be necessary to generate the full 4-quadrant multiplying capability or a bipolar output swing, which is easily accomplished by using an additional U4 external amplifier configured as a summing amplifier (see Figure 22). In this circuit, the second amplifier, U4, provides a gain of 2 that increases the output span magnitude to 5 V. Biasing the external amplifier with a 2.5 V offset from the reference voltage results in a full 4-quadrant multiplying circuit. The transfer equation of this circuit shows that both negative and positive output voltages are created as the input data (D) is incremented from code zero ($V_{OUT} = -2.5$ V) to midscale ($V_{OUT} = 0$ V) to full-scale ($V_{OUT} = +2.5$ V).

$$V_{OUT} = (D/32,768 - 1) \times V_{REF} \quad (\text{AD5543}) \quad (3)$$

$$V_{OUT} = (D/16,384 - 1) \times V_{REF} \quad (\text{AD5553}) \quad (4)$$

For the AD5543, the resistance tolerance becomes the dominant error of which users should be aware.

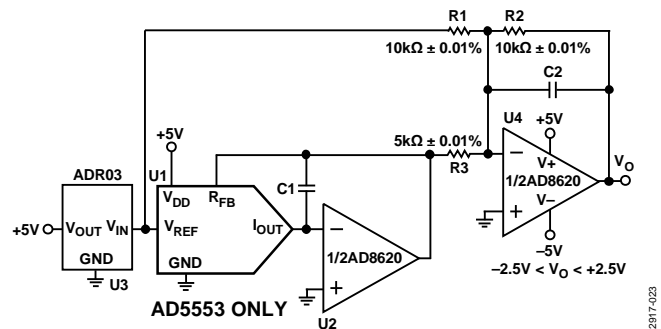


Figure 22. 4-Quadrant Multiplying Application Circuit

AD5543/AD5553

PROGRAMMABLE CURRENT SOURCE

Figure 23 shows a versatile V-I conversion circuit using an improved Howland current pump. In addition to the precision current conversion it provides, this circuit enables a bidirectional current flow and high voltage compliance. This circuit can be used in 4 mA to 20 mA current transmitters with up to 500 Ω of load. In Figure 23, it can be shown that if the resistor network is matched, the load current is

$$I_L = \frac{(R_2 + R_3)/R_1}{R_3} \times V_{REF} \times D \quad (5)$$

R3 in theory can be made small to achieve the current needed within the U3 output current driving capability. This circuit is versatile such that AD8510 can deliver ±20 mA in both directions and the voltage compliance approaches 15 V, which is limited mainly by the supply voltages of U3. However, users must pay attention to the compensation. Without C1, it can be shown that the output impedance becomes

$$Z_O = \frac{R_1' R_3 (R_1 + R_2)}{R_1 (R_2' + R_3') - R_1' (R_2 + R_3)} \quad (6)$$

If the resistors are perfectly matched, Z_O is infinite, which is desirable, and behaves as an ideal current source. On the other hand, if they are not matched, Z_O can be either positive or negative. Negative can cause oscillation. As a result, C1 is needed to prevent the oscillation. For critical applications, C1 could be found empirically but typically falls in the range of a few picofarads (pF).

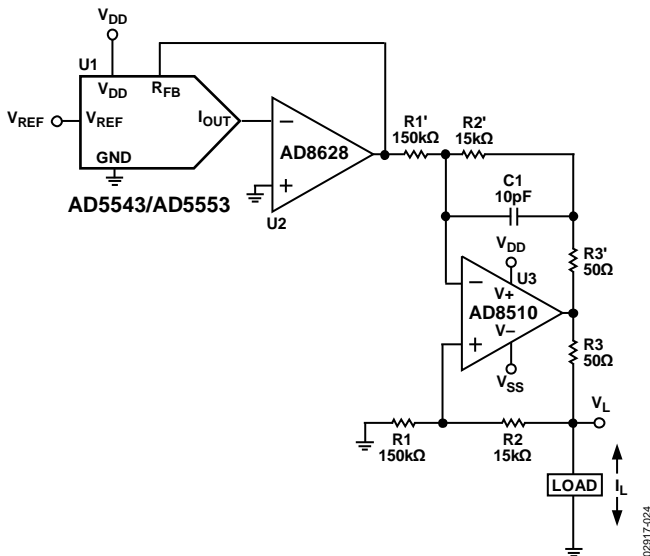


Figure 23. Programmable Current Source with Bidirectional Current Control and High Voltage Compliance Capabilities

REFERENCE SELECTION

When selecting a reference for use with the AD55xx series of current output DACs, pay attention to the output voltage, temperature coefficient specification of the reference. Choosing a precision reference with a low output temperature coefficient minimizes error sources. Table 7 lists some of the references available from Analog Devices, Inc., that are suitable for use with this range of current output DACs.

AMPLIFIER SELECTION

The primary requirement for the current-steering mode is an amplifier with low input bias currents and low input offset voltage. Because of the code-dependent output resistance of the DAC, the input offset voltage of an op amp is multiplied by the variable gain of the circuit. A change in this noise gain between two adjacent digital fractions produces a step change in the output voltage due to the amplifier's input offset voltage. This output voltage change is superimposed upon the desired change in output between the two codes and gives rise to a differential linearity error, which, if large enough, can cause the DAC to be nonmonotonic.

The input bias current of an op amp also generates an offset at the voltage output because of the bias current flowing in the feedback resistor, R_{FB}.

Common-mode rejection of the op amp is important in voltage-switching circuits because it produces a code-dependent error at the voltage output of the circuit.

Provided that the DAC switches are driven from true wideband low impedance sources (V_{IN} and AGND), they settle quickly. Consequently, the slew rate and settling time of a voltage-switching DAC circuit is determined largely by the output op amp. To obtain minimum settling time in this configuration, minimize capacitance at the V_{REF} node (the voltage output node in this application) of the DAC. This is done by using low input capacitance buffer amplifiers and careful board design.

Analog Devices offers a wide range of amplifiers for both precision dc and ac applications, as listed in Table 8 and Table 9.

Table 7. Suitable Analog Devices Precision References

| Part No. | Output Voltage (V) | Initial Tolerance (%) | Maximum Temperature Drift (ppm/°C) | I _{SS} (mA) | Output Noise (μV p-p) | Package(s) |
|----------|--------------------|-----------------------|------------------------------------|----------------------|-----------------------|----------------|
| ADR01 | 10 | 0.05 | 3 | 1 | 20 | SOIC-8 |
| ADR01 | 10 | 0.05 | 9 | 1 | 20 | TSOT-5, SC70-5 |
| ADR02 | 5.0 | 0.06 | 3 | 1 | 10 | SOIC-8 |
| ADR02 | 5.0 | 0.06 | 9 | 1 | 10 | TSOT-5, SC70-5 |
| ADR03 | 2.5 | 0.1 | 3 | 1 | 6 | SOIC-8 |
| ADR03 | 2.5 | 0.1 | 9 | 1 | 6 | TSOT-5, SC70-5 |
| ADR06 | 3.0 | 0.1 | 3 | 1 | 10 | SOIC-8 |
| ADR06 | 3.0 | 0.1 | 9 | 1 | 10 | TSOT-5, SC70-5 |
| ADR420 | 2.048 | 0.05 | 3 | 0.5 | 1.75 | SOIC-8, MSOP-8 |
| ADR421 | 2.50 | 0.04 | 3 | 0.5 | 1.75 | SOIC-8, MSOP-8 |
| ADR423 | 3.00 | 0.04 | 3 | 0.5 | 2 | SOIC-8, MSOP-8 |
| ADR425 | 5.00 | 0.04 | 3 | 0.5 | 3.4 | SOIC-8, MSOP-8 |
| ADR431 | 2.500 | 0.04 | 3 | 0.8 | 3.5 | SOIC-8, MSOP-8 |
| ADR435 | 5.000 | 0.04 | 3 | 0.8 | 8 | SOIC-8, MSOP-8 |
| ADR391 | 2.5 | 0.16 | 9 | 0.12 | 5 | TSOT-5 |
| ADR395 | 5.0 | 0.10 | 9 | 0.12 | 8 | TSOT-5 |

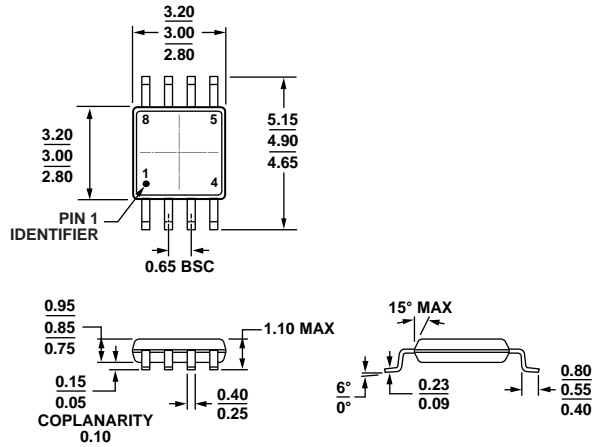
Table 8. Suitable Analog Devices Precision Op Amps

| Part No. | Supply Voltage (V) | V _{OS} Maximum (μV) | I _B Maximum (nA) | 0.1 Hz to 10 Hz Noise (μV p-p) | Supply Current (μA) | Package(s) |
|-----------|--------------------|------------------------------|-----------------------------|--------------------------------|---------------------|-------------------|
| OP97 | ±2 to ±20 | 25 | 0.1 | 0.5 | 600 | SOIC-8, PDIP-8 |
| OP1177 | ±2.5 to ±15 | 60 | 2 | 0.4 | 500 | MSOP-8, SOIC-8 |
| AD8675 | ±5 to ±18 | 75 | 2 | 0.1 | 2300 | MSOP-8, SOIC-8 |
| AD8671 | ±5 to ±15 | 75 | 12 | 0.077 | 3000 | MSOP-8, SOIC-8 |
| ADA4004-1 | ±5 to ±15 | 125 | 90 | 0.1 | 2000 | SOIC-8, SOT-23-5 |
| AD8603 | 1.8 to 5 | 50 | 0.001 | 2.3 | 40 | TSOT-5 |
| AD8607 | 1.8 to 5 | 50 | 0.001 | 2.3 | 40 | MSOP-8, SOIC-8 |
| AD8605 | 2.7 to 5 | 65 | 0.001 | 2.3 | 1000 | WLCSP-5, SOT-23-5 |
| AD8615 | 2.7 to 5 | 65 | 0.001 | 2.4 | 2000 | TSOT-5 |
| AD8616 | 2.7 to 5 | 65 | 0.001 | 2.4 | 2000 | MSOP-8, SOIC-8 |

Table 9. Suitable Analog Devices High Speed Op Amps

| Part No. | Supply Voltage (V) | BW @ ACL (MHz) | Slew Rate (V/μs) | V _{OS} (Max) (μV) | I _B (Max) (nA) | Package(s) |
|----------|--------------------|----------------|------------------|----------------------------|---------------------------|------------------|
| AD8065 | 5 to 24 | 145 | 180 | 1500 | 0.006 | SOIC-8, SOT-23-5 |
| AD8066 | 5 to 24 | 145 | 180 | 1500 | 0.006 | SOIC-8, MSOP-8 |
| AD8021 | 5 to 24 | 490 | 120 | 1000 | 10,500 | SOIC-8, MSOP-8 |
| AD8038 | 3 to 12 | 350 | 425 | 3000 | 750 | SOIC-8, SC70-5 |
| ADA4899 | 5 to 12 | 600 | 310 | 35 | 100 | LFCSP-8, SOIC-8 |
| AD8057 | 3 to 12 | 325 | 1000 | 5000 | 500 | SOT-23-5, SOIC-8 |
| AD8058 | 3 to 12 | 325 | 850 | 5000 | 500 | SOIC-8, MSOP-8 |
| AD8061 | 2.7 to 8 | 320 | 650 | 6000 | 350 | SOT-23-5, SOIC-8 |
| AD8062 | 2.7 to 8 | 320 | 650 | 6000 | 350 | SOIC-8, MSOP-8 |
| AD9631 | ±3 to ±6 | 320 | 1300 | 10,000 | 7000 | SOIC-8, PDIP-8 |

OUTLINE DIMENSIONS

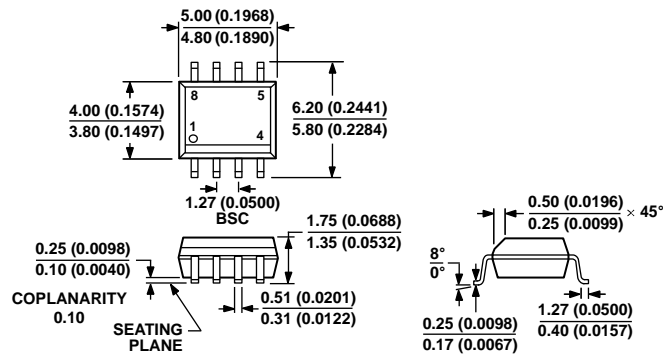


COMPLIANT TO JEDEC STANDARDS MO-187-AA

Figure 24. 8-Lead Mini Small Outline Package [MSOP] (RM-8)

Dimensions shown in millimeters

100709-B



COMPLIANT TO JEDEC STANDARDS MS-012-AA

CONTROLLING DIMENSIONS ARE IN MILLIMETERS; INCH DIMENSIONS (IN PARENTHESES) ARE ROUNDED-OFF MILLIMETER EQUIVALENTS FOR REFERENCE ONLY AND ARE NOT APPROPRIATE FOR USE IN DESIGN.

Figure 25. 8-Lead Standard Small Outline Package [SOIC_N]

Narrow Body

(R-8)

Dimensions shown in millimeters and (inches)

012407-A

ORDERING GUIDE

| Model ^{1, 2} | INL (LSB) | RES (LSB) | Temperature Range | Package Description | Package Option | Branding |
|-----------------------|-----------|-----------|-------------------|---------------------|----------------|----------|
| AD5543CRMZ | ±1 | 16 | −40°C to +85°C | 8-Lead MSOP | RM-8 | DEV |
| AD5543CRMZ-REEL7 | ±1 | 16 | −40°C to +85°C | 8-Lead MSOP | RM-8 | DEV |
| AD5543BR | ±2 | 16 | −40°C to +85°C | 8-Lead SOIC_N | R-8 | |
| AD5543BRZ | ±2 | 16 | −40°C to +85°C | 8-Lead SOIC_N | R-8 | |
| AD5543BRM | ±2 | 16 | −40°C to +85°C | 8-Lead MSOP | RM-8 | DXB |
| AD5543BRM-REEL7 | ±2 | 16 | −40°C to +85°C | 8-Lead MSOP | RM-8 | DXB |
| AD5543BRMZ | ±2 | 16 | −40°C to +85°C | 8-Lead MSOP | RM-8 | DXB# |
| AD5543BRMZ-REEL7 | ±2 | 16 | −40°C to +85°C | 8-Lead MSOP | RM-8 | DXB# |
| AD5553CRM | ±1 | 14 | −40°C to +85°C | 8-Lead MSOP | RM-8 | DUC |
| AD5553CRM-REEL7 | ±1 | 14 | −40°C to +85°C | 8-Lead MSOP | RM-8 | DUC |
| AD5553CRMZ | ±1 | 14 | −40°C to +85°C | 8-Lead MSOP | RM-8 | DUC# |
| AD5553CRMZ-REEL7 | ±1 | 14 | −40°C to +85°C | 8-Lead MSOP | RM-8 | DUC# |

¹ The AD5543 contains 1040 transistors. The die size measures 55 mil × 73 mil or 4,015 sq. mil.

² Z = RoHS Compliant Part, # denotes RoHS-compliant product may be top or bottom marked.

AD5543/AD5553

NOTES